



**A SIMPLE, ECONOMICAL WAY TO WARM YOUR FLOOR**

Warm all kinds of floor coverings including ceramic tile, stone, wood, laminates, vinyl or carpet. WarmWire is true radiant floor heating. It warms your floor and feet much like a mug of hot coffee or cocoa warms your hands. Infrared photography shows how a WarmWire radiant floor matches the skin temperature of the human body (85-90°F), giving occupants perfect comfort.



This FLIR infrared camera was used to capture these images of temperature signatures.



There's a WarmWire spool sized for your project. Lay out and attach the WarmWire strap. Fasten the WarmWire to the strap as you weave it back and forth across the floor. Put down a layer of thin-set mortar and set your tile or stone, or install a layer of self-leveling cement over the cables for hardwood, laminate, vinyl, or carpeted floors. Our installation manual shows all the details.



The WarmWire is held in place by WarmWire strapping attached to the subfloor or backerboard.



*WarmWire is true radiant floor heating. It warms your floor and feet much like a mug of hot coffee or cocoa warms your hands.*

**WARM YOUR FLOOR**

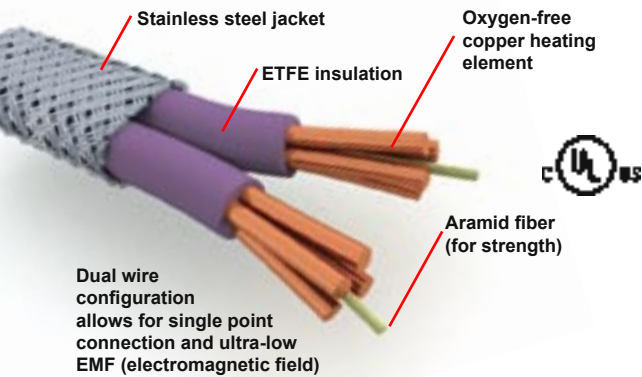


23151 Alcalde Dr. Ste B-1  
Laguna Hills, CA 92653

Toll-Free Phone:  
1-866-558-3369  
Website:  
www.WarmYourFloor.com

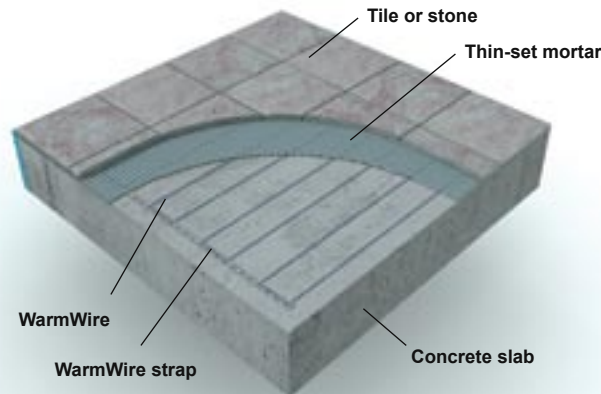
**WATTS SunTouch**  
**WarmWire™**  
FLOOR WARMING SYSTEM

## WarmWire™ up close

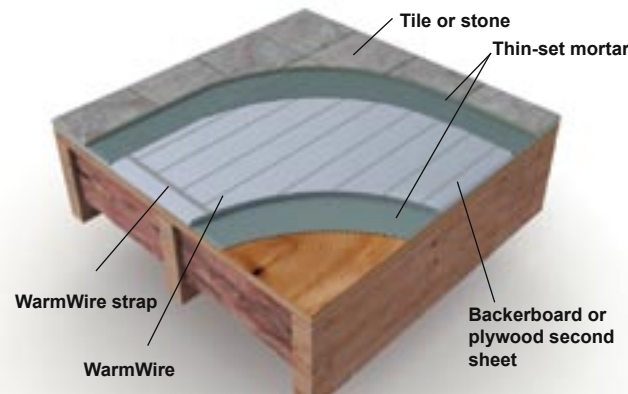


## WarmWire™ in slab and framed floor applications

WarmWire in thin-set over slab



WarmWire with tile backer board



### Easy to install.

There's a WarmWire spool sized for any project. Layout and attach the WarmWire strap. Fasten the WarmWire to the strap as you weave it across the floor. Put down a layer of thin-set mortar for tile or stone, or use a self-leveling cement over the cables for laminates, vinyl, carpet floor coverings. Our installation manual shows all the details.

### Affordable and efficient.

The materials cost for an average 30–40 sq.ft. WarmWire floor is less than \$500. WarmWire is energy-conscious, too. Ten square feet of wire uses the same energy as two 60W light bulbs. At 10¢ a kilowatt, 40 sq.ft. of heat would cost only \$3.00 a month.

### Control your comfort.

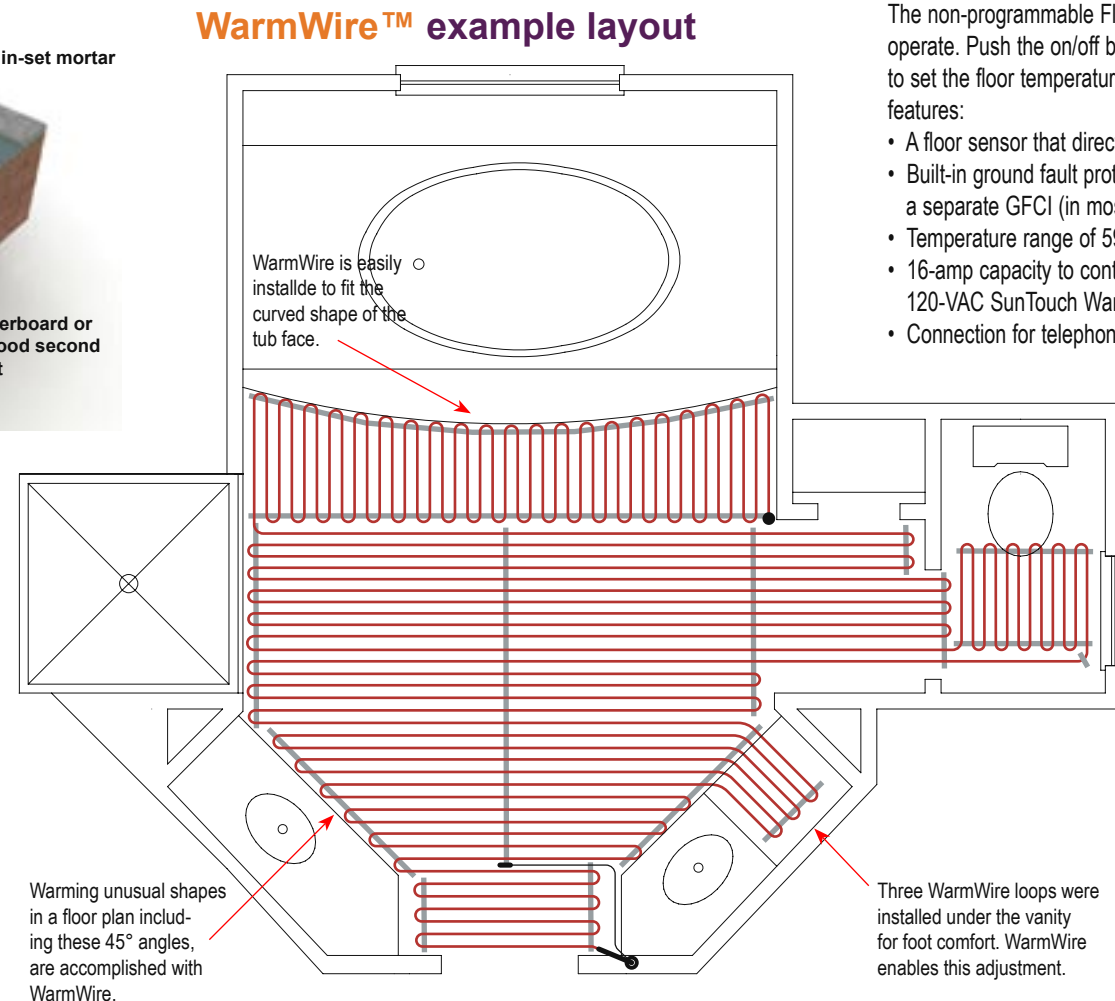
The FloorStat uses a floor sensor to control temperature. The programmable FloorStat automatically turns the system on and off based on your personal schedule.

### Engineered for safety.

Power leads and heating elements are fully grounded from one end of the WarmWire to the other. They're also armored against job site abuse. The heating elements are reinforced with Aramid fiber and insulated with ETFE. WarmWire registers an ultra-low electromagnetic field (EMF). No other company offers this combination of safety features and is Made in the USA.

### WarmWire™ example layout

In the bathroom at right, note the curved area in front of the whirlpool tub where WarmWire easily installs to the unusual shape of the tub face. Note 45° angles which are easily heated with WarmWire.



## WarmWire™ features and benefits

- Single point electrical connection for easier wiring and layout.
- Insulated with high-performance ETFE for longer life.
- Strengthened with aramid reinforcing to protect the heating elements.
- Protected with stainless steel jacket for durability and longevity.
- Available in both 120 VAC and 240 VAC to accommodate both smaller and large rooms.
- Sizes available up to 240 sq.ft.
- UL Listed in the USA and Canada.
- Grounded from one end to the other for safety.
- Dual wire design with Ultra-low EMF for peace of mind.
- Made in the USA

## WarmWire™ estimating and sizing

When figuring the area to be heated, do not include the area under cabinets or appliances. Leave the wire at least 4" away from the toilet wax ring and 2"–6" away from your walls. Do install up to the toe-kick in front of kitchen or bath cabinets so your toes stay warm. Pick a "spacing factor" (2", 2.5", or 3" on center). Below are guidelines for application and respective spacing recommendations.

- **2" o.c. delivers 15 Watts per sq.ft.** — Basement slabs, sunrooms, high heat loss areas, etc.
- **2.5" o.c. delivers 12 Watts per sq.ft.** - Bathrooms, kitchens, dining/living areas, etc.  
*Note: 2.5" o.c. is most commonly used spacing.*
- **3" o.c. delivers 10 Watts per sq.ft.** - Hallways and other low heat loss areas, or floors in more moderate climates.

## WarmWire™ example layout

## WarmWire™ control options

### Programmable FloorStat Control

The Programmable FloorStat is both elegant and intelligent. Available for both 120 VAC and 240 VAC, it accepts programming for three set-points: Comfort, Economy (set-back), and Vacation. Features include:

- A floor sensor that directly senses floor temperature
- A 16-amp capacity controlling up to 150 sq.ft. of 120-VAC WarmWire, or 300 sq.ft. of 240-VAC WarmWire
- Built-in ground fault protection with no need for a separate GFCI (in most code areas)
- Large digital display with BackLight
- Temperature range of 40° to 104°F
- Temperature display in °F or °C
- On/Off switch
- Connection for telephone Remote Control



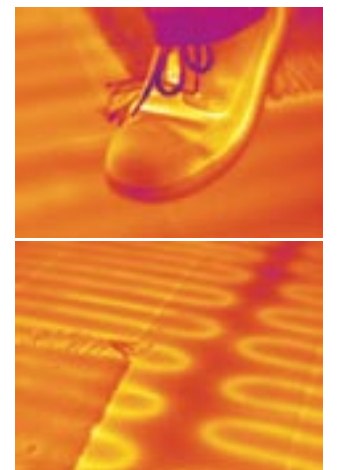
### FloorStat Control

The non-programmable FloorStat is very simple to operate. Push the on/off button and turn the dial to set the floor temperature. It has several other features:

- A floor sensor that directly senses floor temperature
- Built-in ground fault protection with no need for a separate GFCI (in most code areas)
- Temperature range of 59° to 95°F
- 16-amp capacity to control up to 150 sq.ft. of 120-VAC SunTouch WarmWire
- Connection for telephone Remote FloorStat Control



Note:  
Non-programmable FloorStat available only in 120 VAC model.



Nothing matches the comfort of radiant heat. Infrared photography proves it!